

## Indica Tincture 1oz.

METRC Sample: 1A406030000F3C3000000084; METRC Batch: 1A406030000F3C3000000069

Sample ID: 2007ELA1311.3412

Manufactured: 06/02/2020

Distributor

Producer

Strain: Banana Cream Pie

Collected: 07/16/2020

Akashic Labs, Inc.

Akashic Labs, Inc.

Matrix: Ingestible

Received: 07/16/2020

Lic. # C12-0000286-LIC

Lic. # C12-0000286-LIC

Type: Tincture

Completed: 07/22/2020

25575 Hwy 79

25575 Hwy 79 Santa Ysabel, CA 92070

Sample Size: 5 units; Batch: 298 units

Batch#: 365\_200602

Santa Ysabel, CA 92070



## Summary

Test	Date Tested	Result
Batch		Pass
Cannabinoids	07/20/2020	Complete
Terpenes	07/20/2020	Complete
Residual Solvents	07/20/2020	Pass
Microbials	07/21/2020	Pass
Mycotoxins	07/20/2020	Pass
Pesticides	07/20/2020	Pass
Heavy Metals	07/22/2020	Pass
Foreign Matter	07/20/2020	Pass

## Cannabinoids

## Complete

**3.2299 mg/serving**

**ND**

**3.3988 mg/serving**

Total THC

Total CBD

Total Cannabinoids

Analyte	LOD	LOQ	Result	Result	Result	Result
	mg/g	mg/g	%	mg/g	mg/serving	mg/package
THCa	0.008000	0.199000	ND	ND	ND	ND
Δ9-THC	0.016000	0.199000	0.6943	6.943	3.2299	193.7930
Δ8-THC	0.011000	0.199000	ND	ND	ND	ND
THCV	0.018000	0.199000	<LOQ	<LOQ	<LOQ	<LOQ
CBDa	0.009000	0.199000	ND	ND	ND	ND
CBD	0.022000	0.199000	ND	ND	ND	ND
CBDV	0.016000	0.199000	ND	ND	ND	ND
CBN	0.008000	0.199000	ND	ND	ND	ND
CBGa	0.015000	0.199000	<LOQ	<LOQ	<LOQ	<LOQ
CBG	0.015000	0.199000	0.0363	0.363	0.1689	10.1321
CBC	0.012000	0.199000	<LOQ	<LOQ	<LOQ	<LOQ
<b>Total THC</b>			<b>0.6943</b>	<b>6.943</b>	<b>3.2299</b>	<b>193.7930</b>
<b>Total CBD</b>			<b>ND</b>	<b>ND</b>	<b>ND</b>	<b>ND</b>
<b>Total</b>			<b>0.7306</b>	<b>7.306</b>	<b>3.3988</b>	<b>203.9251</b>

1 Unit = 0.5 mL, 0.4652g. 1 mL = 0.9304g. 1 unit(s) per serving. 60 serving(s) per package.

Cannabinoids analysis by SOP LAB-001 utilizing High Performance Liquid Chromatography-Diode Array Detection (HPLC-DAD). Total THC = THCa \* 0.877 + d9-THC; Total CBD = CBDa \* 0.877 + CBD. LOQ = Limit of Quantitation. LOD = Limit of Detection. ND = Not Detected. If moisture content is tested and reported, the cannabinoid results are reported normalized to dry weight.



*Melinda Tu*

Melinda Tu  
QC Manager

Confident Cannabis  
All Rights Reserved  
support@confidentcannabis.com  
(866) 506-5866  
www.confidentcannabis.com



Sample collection for laboratory testing was performed in accordance to BCC's regulations, 16 CCR section 5705, effective 01/2019. Foreign material analysis by SOP LAB-008 utilizing visual examination and optical microscopy. Water activity measurement by SOP LAB-010 utilizing chilled-mirror dew point analysis. Moisture content measurement by SOP LAB-009 utilizing thermogravimetric analysis. This product has been tested by Earth Labs, LLC using valid testing methodologies and quality system as required by state law. All LQC samples were performed and met the acceptance criteria, pursuant to 16 CCR section 5730. Values reported relate only to the product tested. Earth Labs, LLC makes no claims as to the efficacy, safety or other risks associated with any detected or non-detected levels of any compounds reported herein. This Certificate shall not be reproduced except in full, without the written approval of Earth Labs, LLC.



Earth Labs, LLC  
15375 Barranca Pkwy Suite F101  
Irvine, CA 92618

(888) 835-2276  
<http://www.earthlabs.net>  
Lic# C8-0000037-LIC

Regulatory Compliance Testing

2 of 6

## Indica Tincture 1oz.

METRC Sample: 1A406030000F3C3000000084; METRC Batch: 1A406030000F3C3000000069

Sample ID: 2007ELA1311.3412

Manufactured: 06/02/2020

Distributor

Producer

Strain: Banana Cream Pie

Collected: 07/16/2020

Akashic Labs, Inc.

Akashic Labs, Inc.

Matrix: Ingestible

Received: 07/16/2020

Lic. # C12-0000286-LIC

Lic. # C12-0000286-LIC

Type: Tincture

Completed: 07/22/2020

25575 Hwy 79

25575 Hwy 79 Santa Ysabel, CA 92070

Sample Size: 5 units; Batch: 298 units

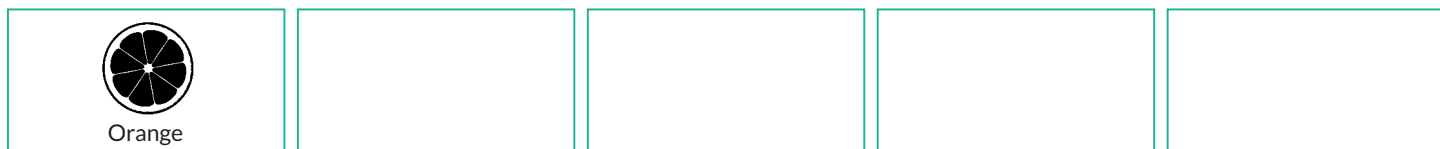
Batch#: 365\_200602

Santa Ysabel, CA 92070

## Terpenoids

Analyte	LOD	LOQ	Result	Result
	%	%	%	mg/g
δ-Limonene	0.00	0.02	0.05	0.5
3-Carene	0.00	0.02	<LOQ	<LOQ
α-Bisabolol	0.00	0.02	<LOQ	<LOQ
α-Humulene	0.00	0.02	<LOQ	<LOQ
α-Pinene	0.00	0.02	<LOQ	<LOQ
α-Terpinene	0.00	0.02	ND	ND
β-Caryophyllene	0.00	0.02	<LOQ	<LOQ
β-Myrcene	0.00	0.02	<LOQ	<LOQ
β-Pinene	0.00	0.02	<LOQ	<LOQ
Camphene	0.00	0.02	<LOQ	<LOQ
Caryophyllene Oxide	0.00	0.02	ND	ND
cis-Nerolidol	0.00	0.02	ND	ND
Eucalyptol	0.00	0.02	ND	ND
γ-Terpinene	0.00	0.02	ND	ND
Geraniol	0.00	0.02	ND	ND
Guaiol	0.00	0.02	ND	ND
Isopulegol	0.00	0.02	<LOQ	<LOQ
Linalool	0.00	0.02	ND	ND
Ocimene	0.00	0.04	<LOQ	<LOQ
p-Cymene	0.00	0.02	ND	ND
Terpinolene	0.00	0.02	<LOQ	<LOQ
trans-Nerolidol	0.00	0.02	ND	ND
Total			0.05	0.5

## Primary Aromas



Date Tested: 07/20/2020

Terpenoids analysis by SOP LAB-006 utilizing Gas Chromatography – Flame Ionization Detection (GC-FID). LOQ = Limit of Quantitation. LOD = Limit of Detection. ND = Not Detected.



*Melinda Tu*

Melinda Tu  
QC Manager

Confident Cannabis  
All Rights Reserved  
[support@confidentcannabis.com](mailto:support@confidentcannabis.com)  
(866) 506-5866  
[www.confidentcannabis.com](http://www.confidentcannabis.com)



Sample collection for laboratory testing was performed in accordance to BCC's regulations, 16 CCR section 5705, effective 01/2019. Foreign material analysis by SOP LAB-008 utilizing visual examination and optical microscopy. Water activity measurement by SOP LAB-010 utilizing chilled-mirror dew point analysis. Moisture content measurement by SOP LAB-009 utilizing thermogravimetric analysis. This product has been tested by Earth Labs, LLC using valid testing methodologies and quality system as required by state law. All LQC samples were performed and met the acceptance criteria, pursuant to 16 CCR section 5730. Values reported relate only to the product tested. Earth Labs, LLC makes no claims as to the efficacy, safety or other risks associated with any detected or non-detected levels of any compounds reported herein. This Certificate shall not be reproduced except in full, without the written approval of Earth Labs, LLC.



Earth Labs, LLC  
15375 Barranca Pkwy Suite F101  
Irvine, CA 92618

(888) 835-2276  
http://www.earthlabs.net  
Lic# C8-0000037-LIC

Regulatory Compliance Testing

3 of 6

## Indica Tincture 1oz.

METRC Sample: 1A406030000F3C3000000084; METRC Batch: 1A406030000F3C3000000069

Sample ID: 2007ELA1311.3412

Manufactured: 06/02/2020

Distributor

Producer

Strain: Banana Cream Pie

Collected: 07/16/2020

Akashic Labs, Inc.

Akashic Labs, Inc.

Matrix: Ingestible

Received: 07/16/2020

Lic. # C12-0000286-LIC

Lic. # C12-0000286-LIC

Type: Tincture

Completed: 07/22/2020

25575 Hwy 79

25575 Hwy 79 Santa Ysabel, CA 92070

Sample Size: 5 units; Batch: 298 units

Batch#: 365\_200602

Santa Ysabel, CA 92070

## Residual Pesticides

Pass

Analyte	LOD	LOQ	Limit	Result	Status	Analyte	LOD	LOQ	Limit	Result	Status
	µg/g	µg/g	µg/g	µg/g			µg/g	µg/g	µg/g	µg/g	
Abamectin	0.022	0.066	0.3	ND	Pass	Fludioxonil	0.015	0.046	30	ND	Pass
Acephate	0.004	0.012	5	ND	Pass	Hexythiazox	0.007	0.021	2	ND	Pass
Acequinocyl	0.015	0.044	4	ND	Pass	Imazalil	0.029	0.086	0.029	ND	Pass
Acetamiprid	0.005	0.015	5	ND	Pass	Imidacloprid	0.008	0.024	3	ND	Pass
Aldicarb	0.025	0.074	0.025	ND	Pass	Kresoxim Methyl	0.025	0.074	1	ND	Pass
Azoxystrobin	0.009	0.028	40	ND	Pass	Malathion	0.028	0.084	5	ND	Pass
Bifenazate	0.005	0.014	5	ND	Pass	Metalaxyl	0.026	0.079	15	ND	Pass
Bifenthrin	0.022	0.066	0.5	ND	Pass	Methiocarb	0.031	0.093	0.031	ND	Pass
Boscalid	0.014	0.042	10	ND	Pass	Methomyl	0.031	0.093	0.1	ND	Pass
Captan	0.21	0.593	5	ND	Pass	Mevinphos	0.01	0.031	0.01	ND	Pass
Carbaryl	0.009	0.027	0.5	ND	Pass	Myclobutanil	0.017	0.052	9	ND	Pass
Carbofuran	0.018	0.054	0.018	ND	Pass	Naled	0.027	0.081	0.5	ND	Pass
Chlorantraniliprole	0.03	0.09	40	ND	Pass	Oxamyl	0.014	0.042	0.2	ND	Pass
Chlordane	0.023	0.075	0.023	ND	Pass	Paclobutrazol	0.017	0.051	0.017	ND	Pass
Chlorfenapyr	0.007	0.022	0.007	ND	Pass	Parathion Methyl	0.011	0.033	0.011	ND	Pass
Chlorpyrifos	0.018	0.054	0.018	ND	Pass	Pentachloronitrobenzene	0.025	0.079	0.2	ND	Pass
Clofentezine	0.025	0.075	0.5	ND	Pass	Permethrin	0.087	0.26	20	ND	Pass
Coumaphos	0.02	0.06	0.02	ND	Pass	Phosmet	0.02	0.06	0.2	ND	Pass
Cyfluthrin	0.158	0.475	1	ND	Pass	Piperonyl Butoxide	0.021	0.063	8	ND	Pass
Cypermethrin	0.037	0.111	1	ND	Pass	Prallethrin	0.026	0.078	0.4	ND	Pass
Daminozide	0.01	0.03	0.01	ND	Pass	Propiconazole	0.029	0.088	20	ND	Pass
Diazinon	0.008	0.024	0.2	ND	Pass	Propoxur	0.03	0.089	0.03	ND	Pass
Dichlorvos	0.015	0.044	0.015	ND	Pass	Pyrethrins	0.02	0.059	1	ND	Pass
Dimethoate	0.027	0.082	0.027	ND	Pass	Pyridaben	0.006	0.018	3	ND	Pass
Dimethomorph	0.016	0.048	20	ND	Pass	Spinetoram	0.019	0.056	3	ND	Pass
Ethoprophos	0.018	0.055	0.018	ND	Pass	Spinosad	0.011	0.034	3	ND	Pass
Etofenprox	0.013	0.038	0.013	ND	Pass	Spiromesifen	0.019	0.057	12	ND	Pass
Etoxazole	0.029	0.088	1.5	ND	Pass	Spirotetramat	0.031	0.094	13	ND	Pass
Fenhexamid	0.019	0.058	10	ND	Pass	Spiroxamine	0.02	0.061	0.02	ND	Pass
Fenoxycarb	0.031	0.092	0.031	ND	Pass	Tebuconazole	0.008	0.025	2	ND	Pass
Fenpyroximate	0.01	0.03	2	ND	Pass	Thiacloprid	0.016	0.048	0.016	ND	Pass
Fipronil	0.016	0.047	0.016	ND	Pass	Thiamethoxam	0.005	0.015	4.5	ND	Pass
Flonicamid	0.001	0.004	2	ND	Pass	Trifloxystrobin	0.005	0.014	30	ND	Pass

Date Tested: 07/20/2020

Pesticides analysis by SOP LAB-005 using Gas Chromatography - Mass Spectrometry - Mass Spectrometry (GC-MS/MS) and by SOP LAB-004 utilizing Liquid Chromatography - Mass Spectrometry - Mass Spectrometry (LC-MS/MS). LOQ = Limit of Quantitation. LOD = Limit of Detection. ND = Not Detected.



*Melinda Tu*

Melinda Tu  
QC Manager

Confident Cannabis  
All Rights Reserved  
support@confidentcannabis.com  
(866) 506-5866  
www.confidentcannabis.com



Sample collection for laboratory testing was performed in accordance to BCC's regulations, 16 CCR section 5705, effective 01/2019. Foreign material analysis by SOP LAB-008 utilizing visual examination and optical microscopy. Water activity measurement by SOP LAB-010 utilizing chilled-mirror dew point analysis. Moisture content measurement by SOP LAB-009 utilizing thermogravimetric analysis. This product has been tested by Earth Labs, LLC using valid testing methodologies and quality system as required by state law. All LQC samples were performed and met the acceptance criteria, pursuant to 16 CCR section 5730. Values reported relate only to the product tested. Earth Labs, LLC makes no claims as to the efficacy, safety or other risks associated with any detected or non-detected levels of any compounds reported herein. This Certificate shall not be reproduced except in full, without the written approval of Earth Labs, LLC.



Earth Labs, LLC  
15375 Barranca Pkwy Suite F101  
Irvine, CA 92618

(888) 835-2276  
<http://www.earthlabs.net>  
Lic# C8-0000037-LIC

Regulatory Compliance Testing

4 of 6

## Indica Tincture 1oz.

METRC Sample: 1A406030000F3C3000000084; METRC Batch: 1A406030000F3C3000000069

Sample ID: 2007ELA1311.3412

Manufactured: 06/02/2020

Distributor

Producer

Strain: Banana Cream Pie

Collected: 07/16/2020

Akashic Labs, Inc.

Akashic Labs, Inc.

Matrix: Ingestible

Received: 07/16/2020

Lic. # C12-0000286-LIC

Lic. # C12-0000286-LIC

Type: Tincture

Completed: 07/22/2020

25575 Hwy 79

25575 Hwy 79 Santa Ysabel, CA 92070

Sample Size: 5 units; Batch: 298 units

Batch#: 365\_200602

Santa Ysabel, CA 92070

## Residual Solvents

Pass

Analyte	LOD	LOQ	Limit	Result	Status
	µg/g	µg/g	µg/g	µg/g	
1,2-Dichloroethane	0.21	0.87	1	ND	Pass
Acetone	8.99	193.80	5000	ND	Pass
Acetonitrile	9.28	193.80	410	ND	Pass
Benzene	0.18	0.87	1	ND	Pass
Butane	9.16	387.60	5000	ND	Pass
Chloroform	0.17	0.87	1	ND	Pass
Ethanol	69.07	775.19	5000	ND	Pass
Ethyl acetate	9.92	193.80	5000	ND	Pass
Ethyl ether	10.12	193.80	5000	ND	Pass
Ethylene oxide	0.08	0.87	1	ND	Pass
Heptane	18.90	193.80	5000	ND	Pass
Isopropyl alcohol	15.76	193.80	5000	ND	Pass
Methanol	30.78	193.80	3000	ND	Pass
Methylene chloride	0.18	0.87	1	ND	Pass
Hexane	31.19	193.80	290	ND	Pass
Pentane	19.19	193.80	5000	ND	Pass
Propane	22.46	387.60	5000	ND	Pass
Toluene	9.94	193.80	890	ND	Pass
Trichloroethylene	0.15	0.87	1	ND	Pass
Total xylenes (ortho-, meta-, para-)	11.95	193.80	2170	ND	Pass

earthlabs

Date Tested: 07/20/2020

Residual Solvents analysis by SOP LAB-003 utilizing Gas Chromatography – Flame Ionization Detection (GC-FID) and Gas Chromatography – Mass Spectrometry (GC-MS).

LOQ = Limit of Quantitation. LOD = Limit of Detection. ND = Not Detected.



*Melinda Tu*

Melinda Tu  
QC Manager

Confident Cannabis  
All Rights Reserved  
[support@confidentcannabis.com](mailto:support@confidentcannabis.com)  
(866) 506-5866  
[www.confidentcannabis.com](http://www.confidentcannabis.com)



Sample collection for laboratory testing was performed in accordance to BCC's regulations, 16 CCR section 5705, effective 01/2019. Foreign material analysis by SOP LAB-008 utilizing visual examination and optical microscopy. Water activity measurement by SOP LAB-010 utilizing chilled-mirror dew point analysis. Moisture content measurement by SOP LAB-009 utilizing thermogravimetric analysis. This product has been tested by Earth Labs, LLC using valid testing methodologies and quality system as required by state law. All LQC samples were performed and met the acceptance criteria, pursuant to 16 CCR section 5730. Values reported relate only to the product tested. Earth Labs, LLC makes no claims as to the efficacy, safety or other risks associated with any detected or non-detected levels of any compounds reported herein. This Certificate shall not be reproduced except in full, without the written approval of Earth Labs, LLC.



Earth Labs, LLC  
15375 Barranca Pkwy Suite F101  
Irvine, CA 92618

(888) 835-2276  
<http://www.earthlabs.net>  
Lic# C8-0000037-LIC

Regulatory Compliance Testing

5 of 6

## Indica Tincture 1oz.

METRC Sample: 1A406030000F3C3000000084; METRC Batch: 1A406030000F3C3000000069

Sample ID: 2007ELA1311.3412

Manufactured: 06/02/2020

Distributor

Producer

Strain: Banana Cream Pie

Collected: 07/16/2020

Akashic Labs, Inc.

Akashic Labs, Inc.

Matrix: Ingestible

Received: 07/16/2020

Lic. # C12-0000286-LIC

Lic. # C12-0000286-LIC

Type: Tincture

Completed: 07/22/2020

25575 Hwy 79

25575 Hwy 79 Santa Ysabel, CA 92070

Sample Size: 5 units; Batch: 298 units

Batch#: 365\_200602

Santa Ysabel, CA 92070

## Microbials

Pass

### Analyte

### Result

### Status

Shiga toxin-producing E. Coli

Not Detected in 1g

Pass

Salmonella SPP

Not Detected in 1g

Pass

Date Tested: 07/21/2020

Microbial impurities testing by SOP LAB-007 utilizing Polymerase Chain Reaction (PCR) and fluorescence detection.

## Mycotoxins

Pass

### Analyte

### LOD

### LOQ

### Limit

### Result

### Status

µg/kg

µg/kg

µg/kg

µg/kg

B1

1

4

ND

Tested

B2

3

9

ND

Tested

G1

3

8

ND

Tested

G2

4

11

ND

Tested

Total Aflatoxins

20

ND

Pass

Ochratoxin A

4

11

20

ND

Pass

Date Tested: 07/20/2020

Mycotoxins analysis by SOP LAB-004 utilizing Liquid Chromatography - Mass Spectrometry - Mass Spectrometry (LC-MS/MS). LOQ = Limit of Quantitation. LOD = Limit of Detection. ND = Not Detected.

## Heavy Metals

Pass

### Analyte

### LOD

### LOQ

### Limit

### Result

### Status

µg/g

µg/g

µg/g

µg/g

Arsenic

0.007

0.021

1.5

ND

Pass

Cadmium

0.004

0.014

0.5

ND

Pass

Lead

0.003

0.009

0.5

ND

Pass

Mercury

0.002

0.008

3

ND

Pass

Date Tested: 07/22/2020

Heavy Metals analysis by SOP LAB-002 utilizing Inductively Coupled Plasma - Mass Spectrometry (ICP-MS). LOQ = Limit of Quantitation. LOD = Limit of Detection. ND = Not Detected.



*Melinda Tu*

Melinda Tu  
QC Manager

Confident Cannabis  
All Rights Reserved  
[support@confidentcannabis.com](mailto:support@confidentcannabis.com)  
(866) 506-5866  
[www.confidentcannabis.com](http://www.confidentcannabis.com)



Sample collection for laboratory testing was performed in accordance to BCC's regulations, 16 CCR section 5705, effective 01/2019. Foreign material analysis by SOP LAB-008 utilizing visual examination and optical microscopy. Water activity measurement by SOP LAB-010 utilizing chilled-mirror dew point analysis. Moisture content measurement by SOP LAB-009 utilizing thermogravimetric analysis. This product has been tested by Earth Labs, LLC using valid testing methodologies and quality system as required by state law. All LQC samples were performed and met the acceptance criteria, pursuant to 16 CCR section 5730. Values reported relate only to the product tested. Earth Labs, LLC makes no claims as to the efficacy, safety or other risks associated with any detected or non-detected levels of any compounds reported herein. This Certificate shall not be reproduced except in full, without the written approval of Earth Labs, LLC.

## Indica Tincture 1oz.

METRC Sample: 1A406030000F3C3000000084; METRC Batch: 1A406030000F3C3000000069

Sample ID: 2007ELA1311.3412

Strain: Banana Cream Pie

Matrix: Ingestible

Type: Tincture

Sample Size: 5 units; Batch: 298 units

Manufactured: 06/02/2020

Collected: 07/16/2020

Received: 07/16/2020

Completed: 07/22/2020

Batch#: 365\_200602

Distributor

Akashic Labs, Inc.

Lic. # C12-0000286-LIC

25575 Hwy 79

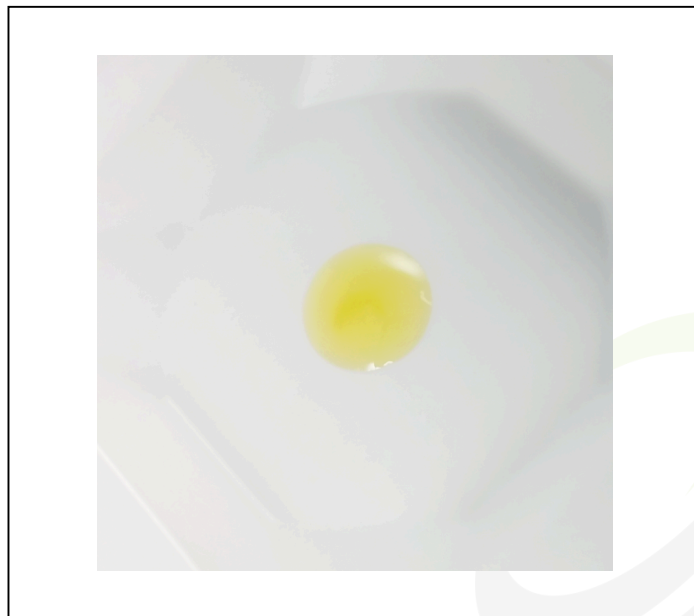
Santa Ysabel, CA 92070

Producer

Akashic Labs, Inc.

Lic. # C12-0000286-LIC

25575 Hwy 79 Santa Ysabel, CA 92070



*Melinda Tu*

Melinda Tu  
QC Manager

Confident Cannabis  
All Rights Reserved  
[support@confidentcannabis.com](mailto:support@confidentcannabis.com)  
(866) 506-5866  
[www.confidentcannabis.com](http://www.confidentcannabis.com)



Sample collection for laboratory testing was performed in accordance to BCC's regulations, 16 CCR section 5705, effective 01/2019. Foreign material analysis by SOP LAB-008 utilizing visual examination and optical microscopy. Water activity measurement by SOP LAB-010 utilizing chilled-mirror dew point analysis. Moisture content measurement by SOP LAB-009 utilizing thermogravimetric analysis. This product has been tested by Earth Labs, LLC using valid testing methodologies and quality system as required by state law. All LQC samples were performed and met the acceptance criteria, pursuant to 16 CCR section 5730. Values reported relate only to the product tested. Earth Labs, LLC makes no claims as to the efficacy, safety or other risks associated with any detected or non-detected levels of any compounds reported herein. This Certificate shall not be reproduced except in full, without the written approval of Earth Labs, LLC.